

Ci3-80QT

Information Sheet



The most elegant design solution to the perennial problem of where to place the all-important front speakers in a high-end home theatre installation, the motorised Ci3-80QT purrs down into position from the ceiling. With a 75mm (3") Uni-Q® array flanked by a pair of long-throw bass drivers of the same size, it combines

Uni-Q's exceptionally wide dispersion characteristics with fluent and accurate response right across the frequency range.

Whispered or shouted, on-screen dialogue and vocals become transparently clear, subtly nuanced and as perfectly located as the speakers themselves.

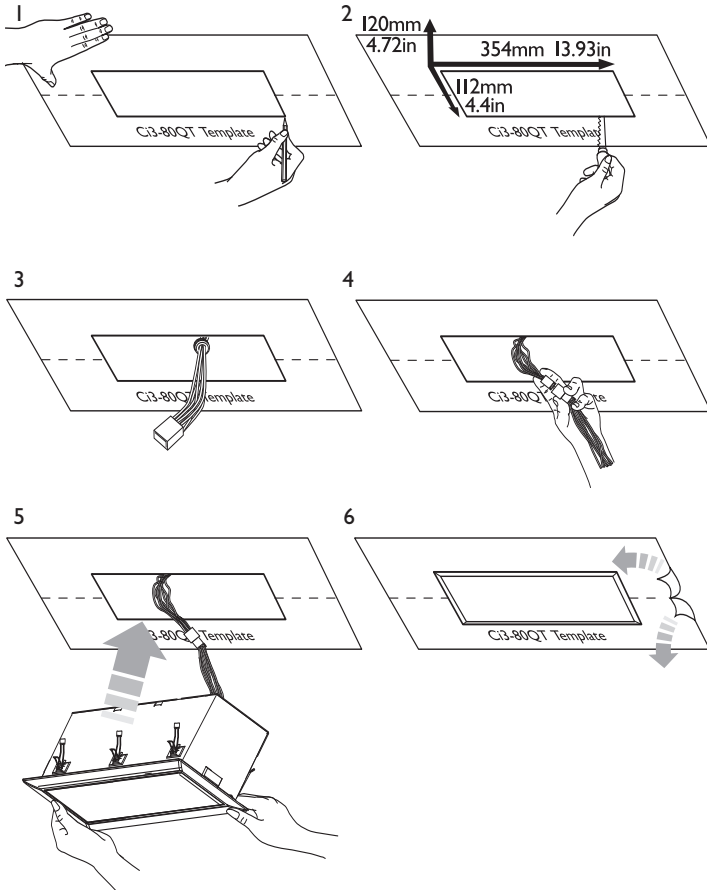
Features and Benefits:

Purpose built for flush mounting into ceilings the Ci3-80QT is the latest addition to the KEF Uni-Q Custom Installation series. The 3-way, Ci3-80QT combines 100W power handling and 87dB sensitivity and consists of a polypropylene cone LF driver with the HF unit mounted between two matched size LF units.

Will require an additional 12 volt supply. The bezel and grill can be painted to match the interior décor.

Ci3-80QT

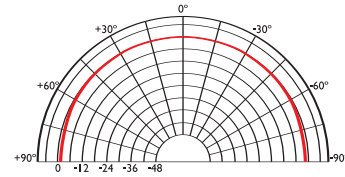
Installation



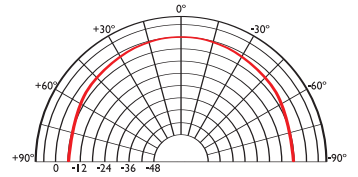
Polar graphs



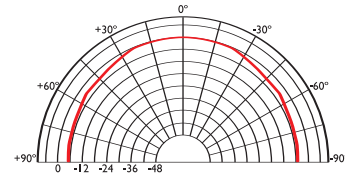
500Hz



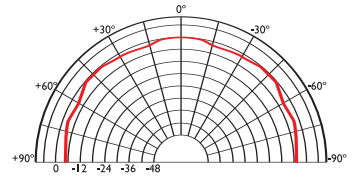
1kHz



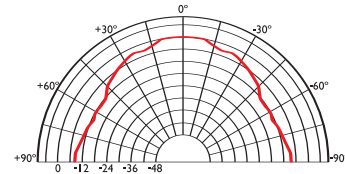
2kHz



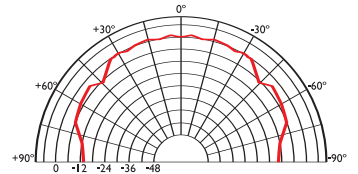
4kHz



8kHz



16kHz



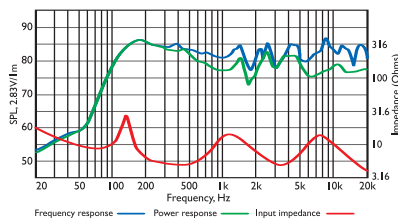
Architectural specifications:

The Ci3-80QT comprises a Uni-Q® array with a coincident mounted, twin neodymium magnet, 15mm (5/8") aluminium dome, high-frequency unit, a 75mm polypropylene midrange unit and two 75mm bass drivers. Performance should meet or exceed the following criteria:

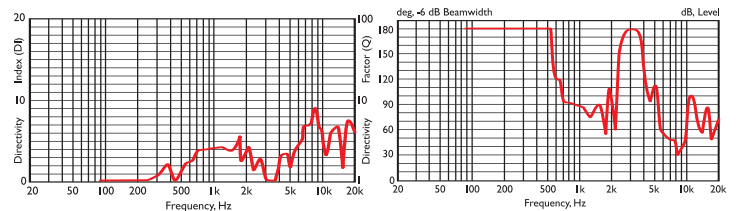
frequency response 1 metre on-axis with swept sinewave shall be 87Hz to 27kHz, sensitivity shall be at least 87dB for 2.83V@1m. The impedance and maximum power shall be 100W at 8 ohms. The Ci3-80QT is best suited for high quality music and home theatre applications where hi-fi performance is required, such as:

- Multi Room systems.
- Home Theatre systems.
- Boardrooms & Offices.
- Hotels.

Frequency / Power response, Input impedance



Directivity Index / Beamwidth



Specifications

Frequency range	87Hz - 27kHz
Sensitivity (2.83v @ 1m)	87dB
Rec. amplifier power	10 - 100W
Nominal Impedance	8Ω (min. 3.2Ω)
Crossover Frequency	300Hz - 3kHz

Enclosure material	Steel
Terminals	terminal blocks up to Ø2.5 mm (0.1") conductor
Dimensions (H x W x D)	128 x 377 x 125 mm, 5 x 14.84 x 4.92 in.
Net weight	3.38kg (7.43lbs)