

KEF Introduces the Ci160TR Ultra-Slim High Performance Two-way Custom Installation Speaker

Latest Ci Model Features KEF's Patented Low Profile Driver, Tangerine Waveguide and Ultra-Thin-Bezel. Fits in Shallowest Ceilings When Nothing Else Will Fit



The new ultra-slim Ci160TR custom installation ceiling speaker combines the advanced driver technology of KEF's acclaimed T Series speakers with the latest marine and architectural technologies to deliver impeccably accurate audiophile quality sound wherever space is at a premium.

Just 40mm (1.57in) deep and requiring a cavity of only 36mm (1.42in), the Ci160TR is possibly the slimmest two way Ci speaker available, and fits snugly into even the narrowest voids without compromising audio performance. Indeed, with KEF's sophisticated 115mm (4.5in) mid/bass driver and 25.5mm (1in) vented tweeter boasting KEF's patented 'tangerine' waveguide, its acoustic response and dispersion characteristics are incomparably better than with conventional flat speakers. The sound you enjoy is lush, precise and expansive.

"Hide your speakers, not your sound" is the Ci Series mantra, and with ultra-thin bezels and moisture-resistant magnetic grilles, that's exactly what the Ci160TR achieves - even where every millimetre counts.

With only a few easy steps to follow and ingenious design features to simplify fitting (either with conventional doglegs or by screwing directly to a solid surface), each speaker is fitted in minutes once the hole is cut and the cable run.

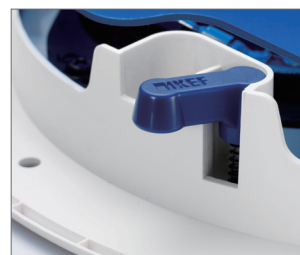
For demanding applications such as luxury high-rise apartments and super-premium motor yachts, the Ci160TR is where interior design meets listening pleasure.

KEY FEATURES

- < 36mm mounting depth allows fitment to very restricted cavities
- Paintable ultra-thin bezel and magnetic grille to blend unobtrusively with décor
- Vented tweeter with 'tangerine' waveguide for natural HF response and wide, even dispersion
- Rigid flat diaphragm assures clean upper bass and mid-range response
- Low profile LF unit with excellent bass extension
- Fast, versatile installation on virtually any surface via dogleg or direct screw fastening

SPECIFICATIONS

Model	Ci160TR	
Series	T Series	
Nominal impedance	8Ω	
Sensitivity (2.83V/1m)	87dB	
Frequency response (±6dB) open-backed	110Hz - 24kHz	
Crossover frequency	1.7kHz	
Drive units	LF	115mm (4.5in.) dual layer
	HF	25.5mm (1in.) aluminium HF
Recommended amplifier power	10 - 100 W	
Product external dimensions	Diameter Ø	234.6mm (9.24in.)
	Depth	40mm (1.57 in.)
Cut-out dimensions ¹	Diameter Ø	196mm (7.71in.)
Net Weight	1kg (2.2lbs.)	
Mounting depth from surface	<36mm (1.7/16 in.)	
Minimum wall thickness	10mm (0.39 in.)	
Maximum wall thickness	25.5mm (1 in.)	
Optional rough in frame	RIF160R	
Optional rear enclosure	RNC160R	



Visit: <http://www.kef.com> for more about KEF and its products.

KEF reserves the right, in line with continuing research and development, to amend or change specifications. E&OE.